

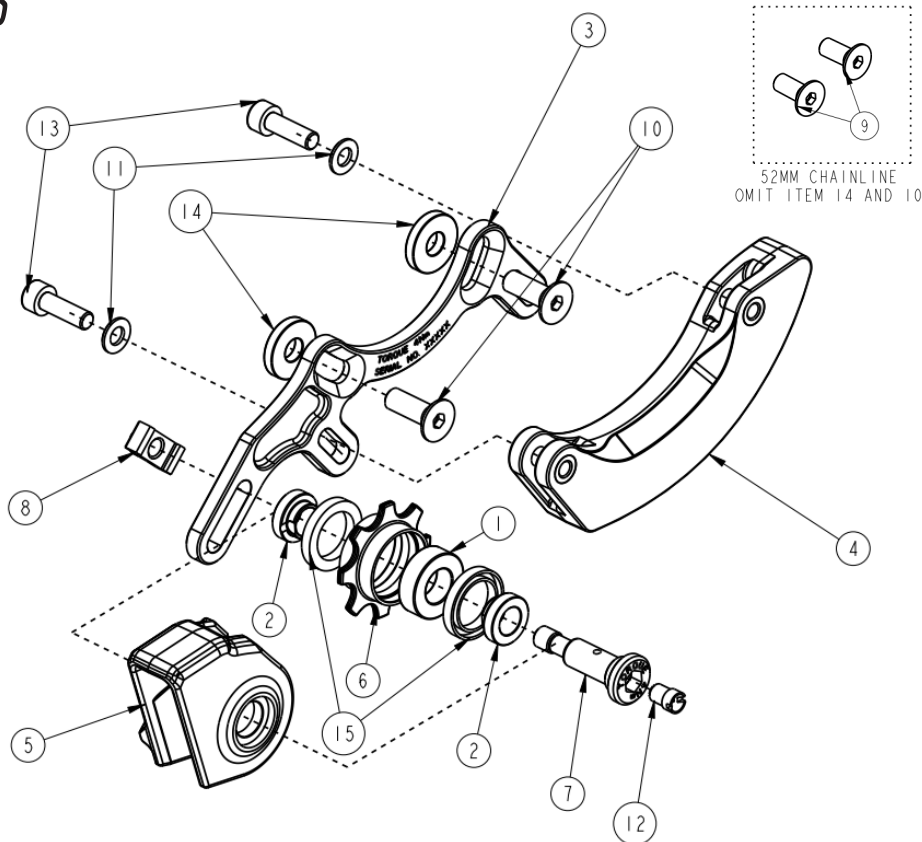
A close-up photograph of a bicycle's drivetrain. The image shows a silver chainring with a white floral logo and the text 'X-SYNC 2' and 'EAGLE TECHNOLOGY'. A silver chain is visible, with a link marked 'SRAM'. In the foreground, a black torque wrench is partially visible, with the text 'TORQUE' and '4Nm' on its head. The background is blurred, showing more of the bike's frame and components.

CHAIN GUIDE

INSTALLATION

DEVIATE
cycles

PARTS



Item No	Part Number	QTY	Description
1	6800 2RS W6	1	6800 2RS W6 1 68002RSW6 (10x19x6WIDE)
2	AMP06-D0-008	2	CHAIN GUIDE - TOP HAT
3	AMP06-D9-002	1	CHAIN GUIDE - BACK PLATE
4	AMP06-D9-003	1	CHAIN GUIDE - BASH
5	AMP06-D9-004	1	CHAIN GUIDE - GUIDE
6	AMP06-D9-005	1	CHAIN GUIDE - JOCKEY WHEEL
7	AMP06-D9-009	1	CHAIN GUIDE - BOLT
8	AMP06-D9-010	1	CHAIN GUIDE - T-NUT
9	CSK_M6X15	2	COUNTER SINK - M6 X 15 SS A2/A4
10	CSK_M6X18	2	COUNTER SINK - M6 X 18 SS A2/A4
11	M5_WASHER_SS	2	M5 STAINLESS STEEL WASHER
12	ZERKS_FITTING	1	10-32 UNF FLUSH STRAIGHT SLOTTED
13	CAP_M5X16	2	CAP HEAD - M5 X 16 SS A2/A4
14	M6_THICK_WASHER	2	M6 THICK WASHER - A2 DIN 7349
15	G14X20X3C_INA	2	G14X20X3C_INA



STEP 1

Using a 6mm Allen key remove the Chain Guide Bolt from the Chain Guide.

Skip this step if you are able to unlink and re-link your chain or are yet to link a new chain.

STEP 2

Remove the Jockey-wheel from the Chain Guide housing. Place the Chain Guide housing over the chain (as shown) and then re-insert the Jockey-wheel into the Chain Guide housing. If you are able to unlink and re-link your chain or are yet to link a new chain, pass the chain through the Chain Guide, above the jockey-wheel, and (re)link your chain.

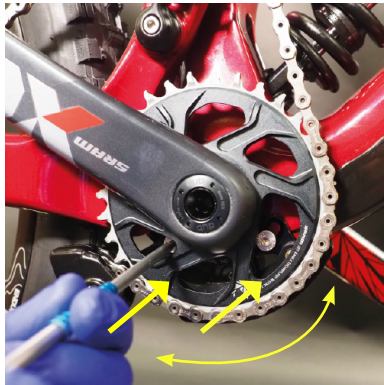
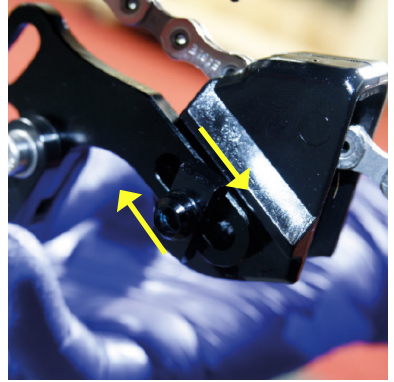


STEP 3

Using a 6mm Allen key, re-insert the Chain Guide Bolt into the Chain Guide, now that the chain runs through the guide, ensuring the Jockey-wheel is aligned for the bolt to pass through. Whilst doing this, place the bash guard into the desired position (see step 4) and thread the Chain Guide Bolt into the female thread of the T-nut.

STEP 4

Set the Bash Guard by sliding it left or right until it is in the desired position and tighten the Chain Guide Bolt to 4nm of torque by threading it into the T-nut.



STEP 5

Align the Bash Guard with the bash guard mounting points on the bike and move the Bash Guard clockwise or anti-clockwise to find the optimum position. Using a 4mm Allen key, thread the Chain Guide CSK Bolts into the female Bash Guard threads on the frame (as shown).

STEP 6

Test and tweak the Bash Guard and Chain Guide positioning using the sliders on the Bash Guard until you've found the optimum setting.



If you have any issues with the installation of the Chain Guide, please do not hesitate to contact us at info@deviatecycles.com